

Design Plus Build Co., Ltd.



Design + Build

Consultancy - Engineering - Project Management

About Us

“Our strength is to understand your project requirements and translate it into the facility that meets your needs”



Design Plus Build Co., Ltd (D+B), the German-Thai company based in Thailand, established in 2005 is providing consultancy services for the construction of industrial buildings throughout Asia.

With our strong technical knowledge in project consultancy and engineering services we are able to offer you our expertise in the construction of your industrial project.

This has been proven on several of our projects which range from warehouses to complex buildings with clean rooms as required for the assembly of solar modules and the production of crystalline solar cells.

About Us



Consultancy services for solar rooftops and solar farms have been added to our portfolio in 2009 and established us as a recognized party in Southeast Asia.

Our multidisciplinary team is able to serve project developers, lenders, engineering and construction companies with a full range of services required throughout the life cycle of a solar power plant.

D+B provides consultancy and engineering services performing Feasibility Study, Conceptual Design, Detailed Design, Design Review, Project Management, Project Supervision and Inspection.

Cooperation Partner



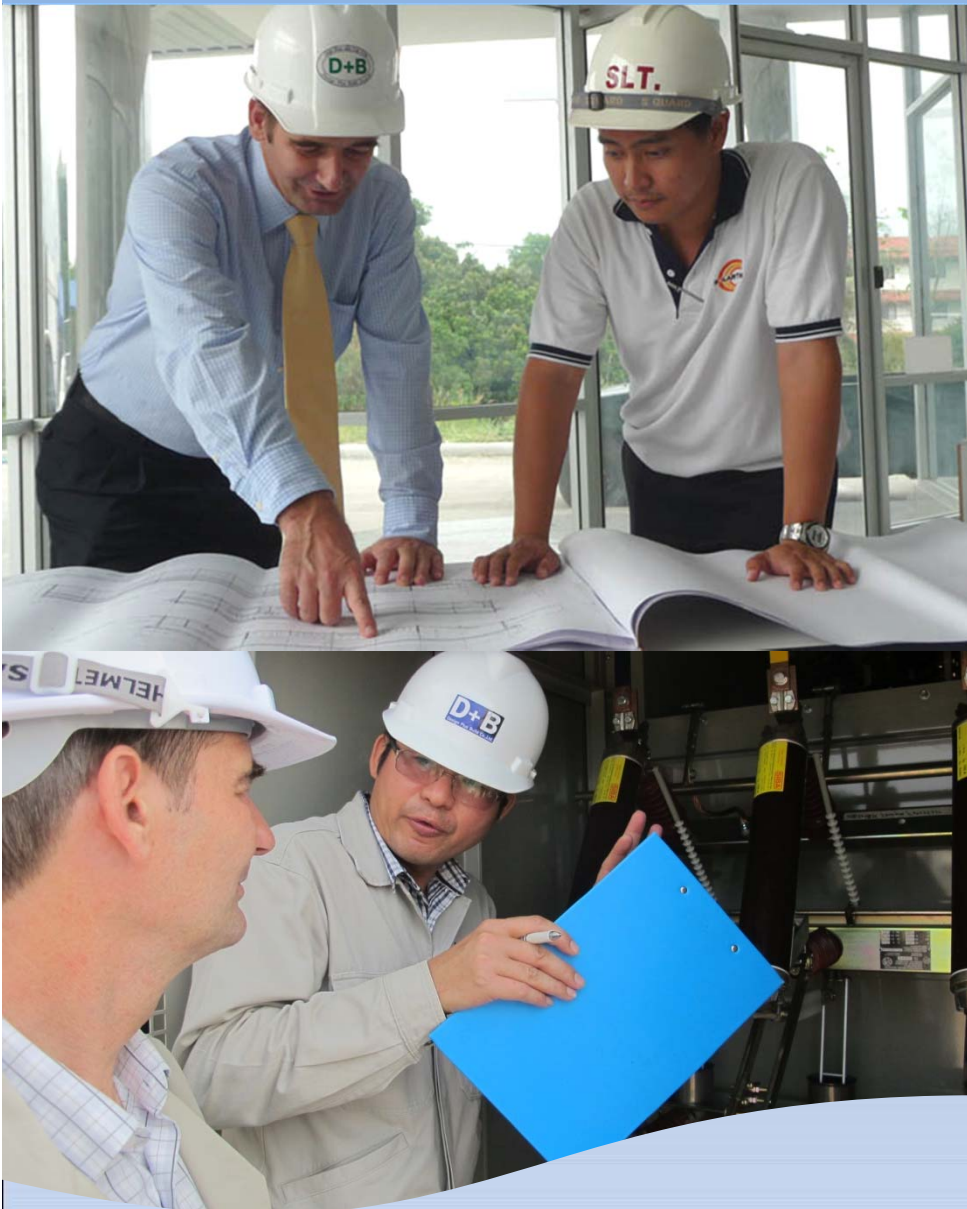
Engineering made in Germany

Bencer is a German Project Management & Engineering firm that specializes in Greenfield construction and renovation projects of industrial buildings in China with branches in all major cities.

D+B and Bencer are cooperation partners in Thailand and India, combining Bencer's large customer base in China with D+B's project experience in India and Thailand.



Scope of Services



Project Management

We manage your industrial project from the development stage including all technical aspects. Whether it's a new building, upgrade or fit-out of your rented property.

- EPCM
- Programming Management
- Design Management
- Procurement Management
- Construction Management
- Approval & Permission
- Management

Scope of Services



Engineering

We have experienced in-house engineers for civil works, architecture, mechanical, electrical and process know-how

- FEED
- Design & Engineering
- Value Engineering
- Energy Efficiency Engineering

Scope of Services



Consulting

We help foreign companies to develop the project and understand the country specific requirements.

- Technical Due Diligence
- Investment Advisory
- Site Selection Services
- Project & Company Registration Consulting

Scope of Services



Facility Management

We implement your facilities Operation and Maintenance Plan and maintain your project.

- Maintenance & Facility Repair
- Building & Energy Efficiency Optimization
- Conversion & Extension
- Renovation & Retrofit
- Office & Workshop fit out

D+B Project References

Facility Engineering



Customer Reference

Malee®

Malee Sampran Public
Company Limited
Thailand



WebSol Energy
System Ltd, India



Solartron Public
Company, Thailand



Ekarat Solar Company,
Thailand

STRABAG

STRABAG Industries
(Thailand) Co., Ltd.



Dockweiler Asia., Ltd
(Thailand)



TrelleborgVibracoustic
Thailand Ltd.



Shinsung Eng,
Korea

Tainergy Tech Co.,Ltd.

Tainergy Tech Company Taiwan



Jupiter International
Limited,India

MOMENTIVE™

Momentive
Performance Materials
(Thailand) Limited



Suniva Inc., U.S.A.



Hyundai Heavy Industries
Korea



Shan Pvt. Ltd.
India Solar



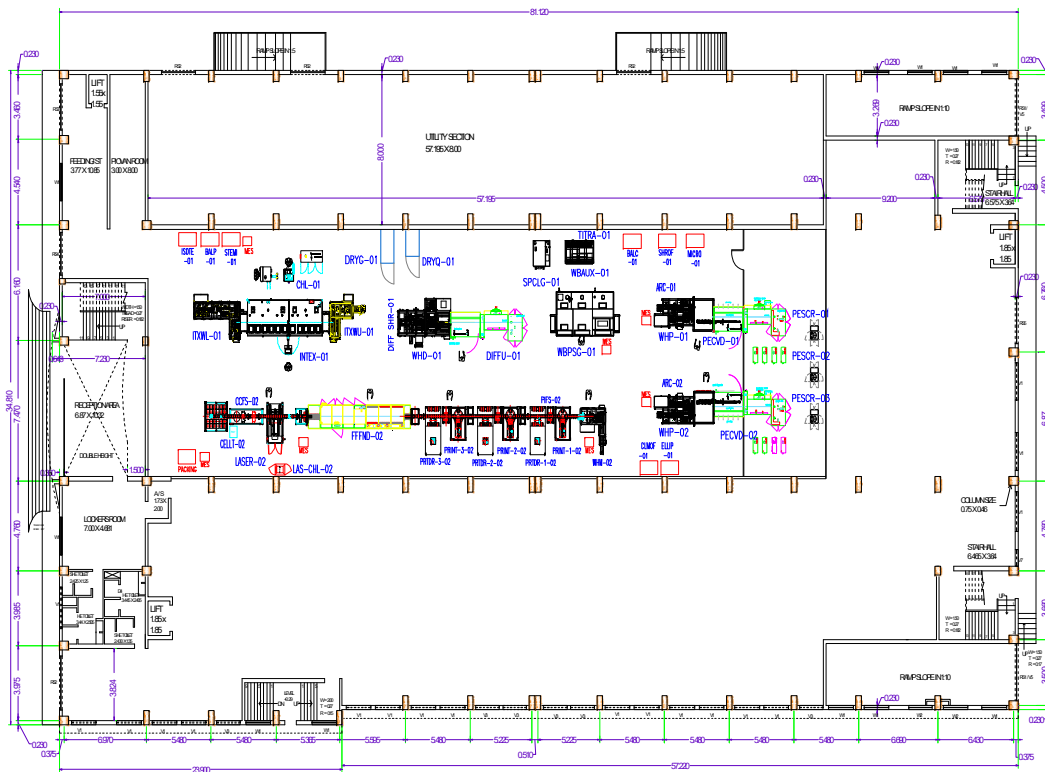
Project Reference



- Client:** Solartron Public Company Limited
- Industry:** Solar Cell Production
- Project:** Solar Cell & Solar Module Production
30 MWp
- Location:** Thailand
- Period:** 2007
- Service:** Project Development, Master Plan
Design, Conceptual Design, Detailed
Design & Project Management

Facility Engineering

Project Reference



- Client:** Jupiter International Limited
- Industry:** Solar Cell Production
- Project:** Production Line 30 MWp
- Location:** Baddi, Himachal Pradesh, India
- Period:** 2008 - 2009
- Service:** Facilities Engineering, Project Supervision



Project Reference



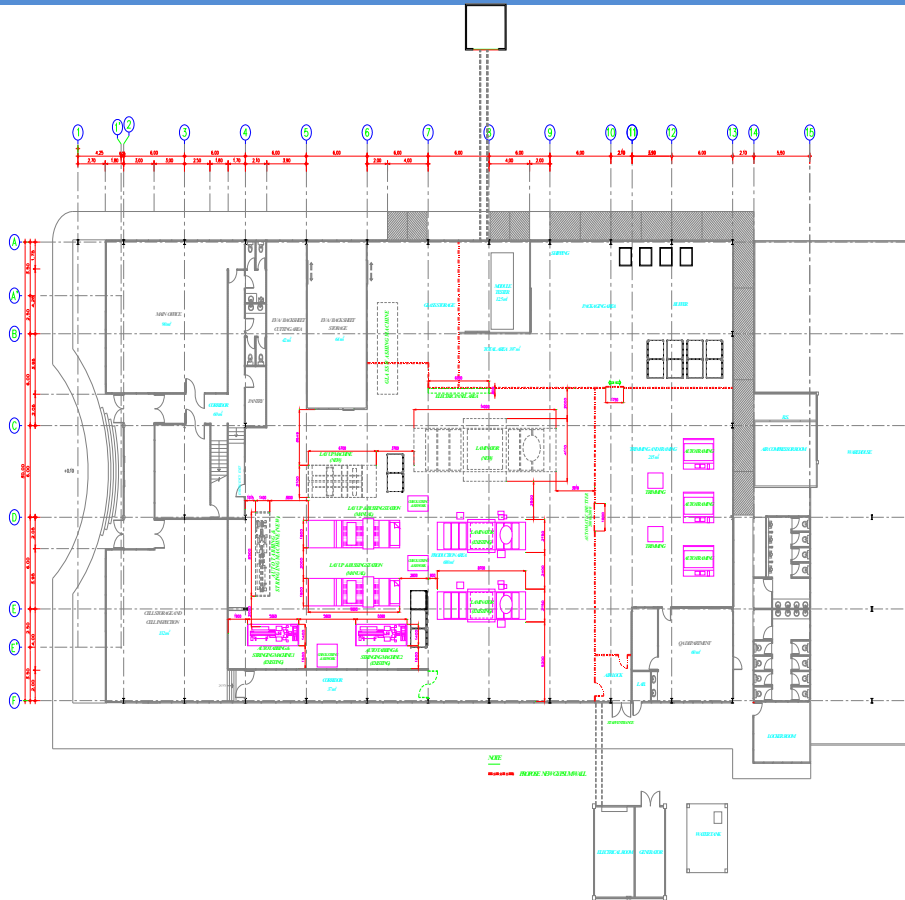
- Client:** Ekarat Solar Company Limited
- Industry:** Transformer / Solar Cell Production
- Project:** Production Line 30 MWp
- Location:** Thailand
- Period:** 2006, 2008 - 2009
- Service:** Turnkey Solar Module Production, Conceptual Design Cell Production

Facility Engineering

Project Reference



- Client:** Solartron Public Company Limited
- Industry:** Solar Cell and Module Production
- Project:** Solar Cell Production Line 50 MWp
- Location:** Thailand
- Period:** 2010
- Service:** Facilities Upgrade, Production Area and Process Flow Improvement





Project Reference



- Client:** Websol Energy System Limited
- Industry:** Solar Cell Production
- Project:** Solar Cell Production 120 MWp
Module Production 100 MWp
- Location:** Kolkata, India
- Period:** 2007 - 2010
- Service:** EPCM



Project Reference



Client: Shan Solar Pvt. Limited

Industry: Solar Cell Production

Project: Module Production 30/60 MWp

Location: Chennai, India

Period: 2010

Service: Building & Facilities Design
Project Supervision



Project Reference



- Client:** Dockweiler Asia Company Limited
- Industry:** Stainless Steel Tubes and Fittings
- Project:** Warehouse and Production Buildings
- Location:** Phetchaburi, Thailand
- Period:** 2011 - 2013
- Service:** EPCM



Project Reference



STRABAG

- Client:** STRABAG Industries (Thailand) Company Limited
- Industry:** Construction Company
- Project:** Railway Sleeper Automated Factory
- Location:** Rayong, Thailand
- Period:** 2013
- Service:** EPCM



Project Reference



Malee

Client: Malee Group Public Company Limited

Industry: Food & Beverage

Project: Filling & Packaging PET, UHT

Location: Nakhon Pathom, Thailand

Period: 2014- 2015

Service: Master Planning Factory Improvement



Project Reference



Client: Momentive Performance
Materials(Thailand)Limited

Industry: Silicones and Quartz Manufacturing

Project: Silicones Production Line

Location: Rayong, Thailand

Period: 2014- 2015

Service: Construction Supervision



Project Reference



Client: Malee Group Public Company Limited

Industry: Food & Beverage

Project: Filling & Packaging PET, UHT

Location: Nakhon Pathom, Thailand

Period: 2016

Service: Factory Upgrade Filling & Packaging Line



Project Reference



- Client:** Dockweiler Asia Phase 2
- Industry:** Stainless Steel Tubes and Fittings
- Project:** Warehouse and Production Buildings
- Location:** Phetchaburi, Thailand
- Period:** 2016
- Service:** EPCM

Customer's Testimony



บริษัท โรจนะ เอ็นเนอร์จี้ จำกัด
ROJANA ENERGY CO., LTD.

2034/115 ชั้น 26 อาคารอิตัลไทย ทาวเวอร์ ถนนเพชรบุรีตัดใหม่ แขวงบางกะปิ เขตห้วยขวาง กรุงเทพฯ 10310
26th Floor Italthai Tower, 2034/115 New Petchburi Road, Bangkok, Huaykwang, Bangkok 10310 Thailand
Tel: +66 (0) 2716 1750-7 Fax: +66 (0) 2716 1758-9

May 14, 2014

**Subject: Testimony: Design Plus Build Co., Ltd.
Rojana Solar Farm Project, 3x8 MW**

To Whom It May Concern:

Please find this document as my testimony for Design Plus Build Co., Ltd. who has been working as an Engineering and Project Management Consultant with our company for more than 3 years.

Rojana Energy Company Limited began working with Design Plus Build, Co. Ltd. (D+B) in 2011 to perform the design for our 3 solar power plants of 8.0 MW(AC) each, for which we had obtained licenses from the Thai government.

After award of the EPC contract we did sign the contract for Project Management Consultant Services with D+B. The services included engineering services, review, site and commissioning supervision of the Project. Rojana Energy Company Limited is the owner of this project with the project being located within the Rojana Industrial Park in Ayutthaya, Thailand.

It has been a pleasure for us to do business with D+B. We have been impressed with the professional project management consultant services your company has offered us. We are very satisfied with the project and all the relevant services associated with it.

Design Plus Build Co., Ltd. services and their overall commitment have lead to an efficient and successful project for us.

Thank you,

Mr. Thor Ramstetter
Project Manager

Rojana Energy Company Limited



TrelleborgVibracoustic (Thailand) Limited
Eastern Seaboard Hemaraj Rayong Estate 700/5 Moo 7, Kaokansong, Sriracha Chonburi

25. March 2015

**Testimony: Design Plus Build Co., Ltd.
TrelleborgVibracoustic Factory Project, Rayong, Thailand**

To Whom It May Concern:

Our Partner Design Plus Build Co., Ltd. has facilitated the implementation of TrelleborgVibracoustic's first production facility in Thailand through exceptional leadership during design and project management. Our Partner has been our primary owner's representative in designing the facility and as project manager and was responsible for detailed design, tendering, construction and procurement. Our Partner created an environment of trust and confidence with TrelleborgVibracoustic, meeting the anticipated milestones and quality of works. There is no doubt that their participation in the process saved us time and money.

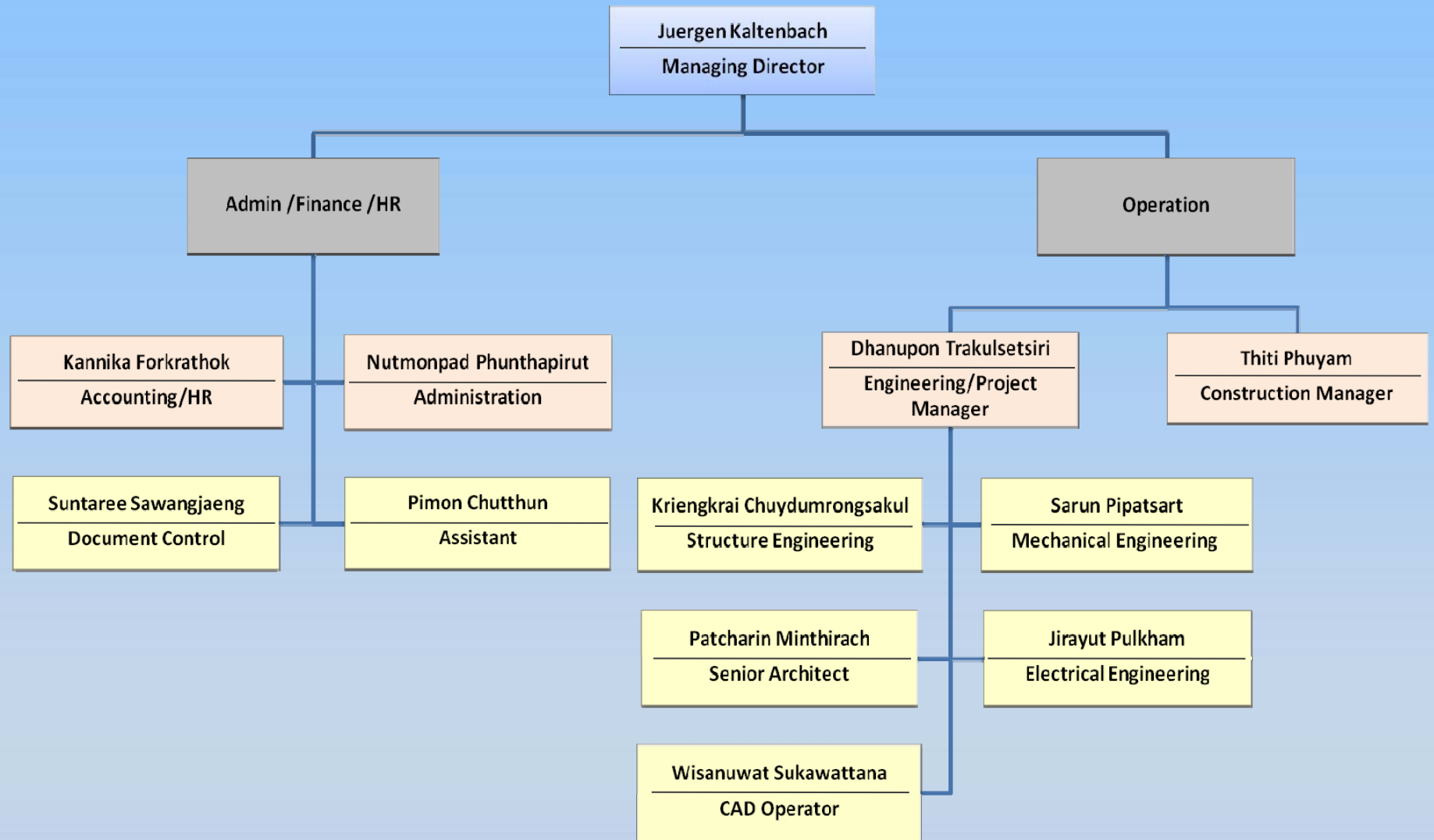
It has been a pleasure for us to do business with D+B. We are very satisfied with the project and all the relevant services associated with it.

Thank you!

Dr. Matthias Sckuhr
President APAC

TrelleborgVibracoustic (Thailand) Limited
Eastern Seaboard Hemaraj Rayong Estate
700/5 Moo 7, Kaokansong, Sriracha, Chonburi Province 20110
www.tbvc.com

Organization Chart



Management BIO's



Juergen Kaltenbach
Managing Director

Juergen Kaltenbach has been consultant and project manager to new factory projects in the semiconductor, pharmaceutical, food, and photovoltaic industry working with industry leading German companies for more than 20 years, with over 15 years based in SEA.

His works prior to establishing Design Plus Build company include facilities and hook-up design, project management and being managing director for an international design and construction firm.

Bringing in the facilities design expertise and factory design standards from the semiconductor industry, he established himself in the photovoltaic industry as a leading consultant in module, solarcell and power plant business with projects executed in Asia, Australia, Africa, Europe and the USA.



Thank You

D+B

Design Plus Build Co.,Ltd.

Design Plus Build Co.,Ltd.

670/410 Soi Taladkhwan Pathana, Asoke-Dindaeng Rd.,
Dindaeng, Dindaeng, Bangkok (Thailand) 1 0 4 0 0

Phone: +66 2 640 5980-3 Fax: +66 2 640 5984

Email : db@d-b.co.th Web site : www.d-b.co.th